

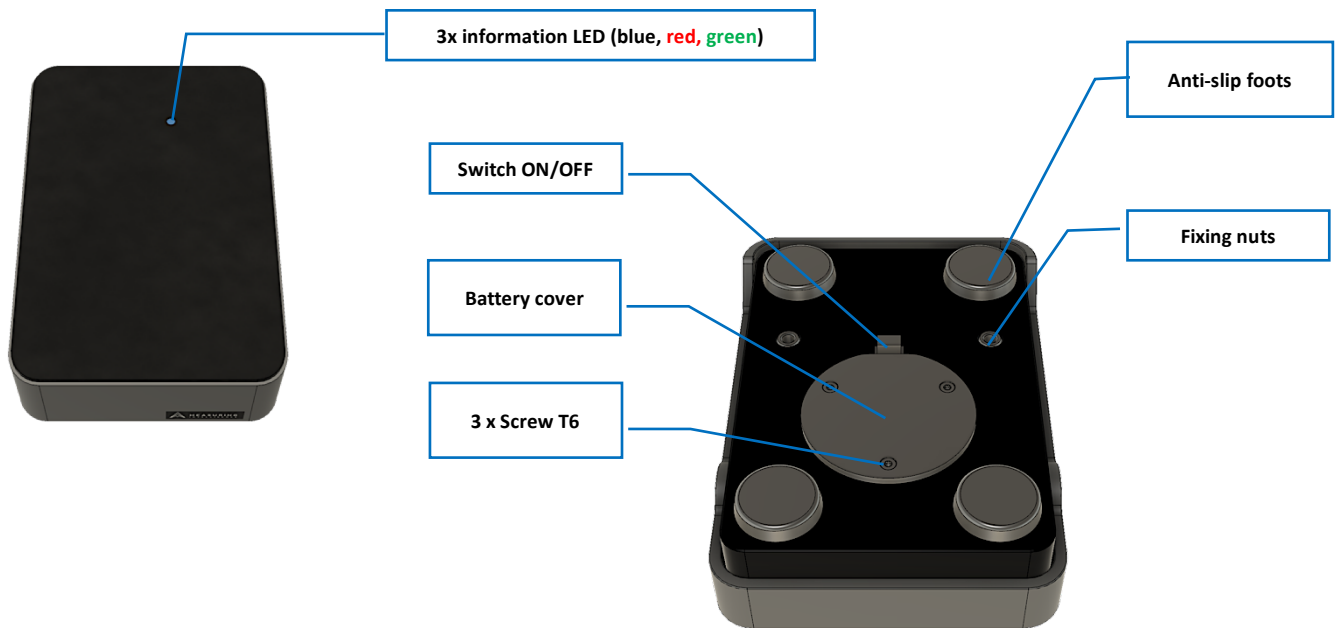
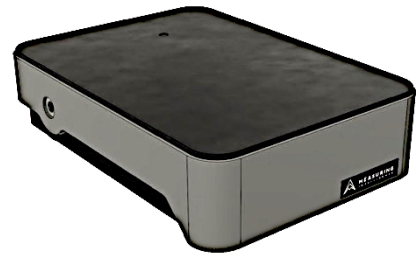
## Description:

Bluetooth Low Energy 5.0 Foot Switch, industrial grade with range up to 50 m.

A part of Measuring Intelligence manufactured infrastructure, enables remote management and Over the Air upgrade (OTA)

Simple connection with any BLE Instrument by drag & drop function of our software.

- Recommended for measurement processes automation,
- Enable Gauge digitization (OK, NOK)
- Read a value from any BLE Instrument
- Software configuration on request



## TECHNICAL SPECIFICATION

Footswitch		3100002
Connection		Wireless BLE 5.0
Weight	g	160
Length	mm	112
Width	mm	81
Height	mm	30
Wireless Range	up to m	50 <sup>1)</sup>
Power supply	3 V	CR 2477 (Panasonic, Lithium)
Battery life	up to years	3 <sup>2)</sup>

<sup>1)</sup> depends on environment

<sup>2)</sup> depends on usage